



**FACT SHEET**

Sipwise  
**CPBX**

for Enhanced  
Cloud Communication

[sipwise.com](https://sipwise.com)



for Enhanced  
Cloud Communication

## Hosted PBX for Enterprise Communication

Sipwise CPBX is a truly incredible addition to an existing Sipwise C5 infrastructure for every network operator and telephony service provider. You can offer next generation access and provide state-of-the-art cloud-based communication services to your business clients.

CPBX's features include outstanding simplicity and great usability. It is lean and self-sufficient. It scales easily to hundreds and thousands of PBX phone systems, allowing your customers to experience voice over IP and cloud calls.



### Platform Design

CPBX is an add-on module to Sipwise C5, installed on existing infrastructure. No extra hardware is required.

Our CPBX module includes a signalling and media engine to provide the extended feature set for SME customers as well as a zero-touch auto-provisioning system for a wide range of business phones like Cisco SPA, Yealink SIP-T, Polycom VVX and Panasonic KT-UX.



### Deployment

To deploy the Sipwise CPBX, a running Sipwise C5 is a must. The module can then be installed and activated very quickly; allowing you to rapidly extend the market segment to B2B.



### Modules

CPBX includes an auto-provisioning server to instantly activate customer phones without the need for pre-provisioning or manual configuration by the end customer. An application server powers a rich set of server-side features suited for SME customers.



### Performance

Sipwise CPBX follows the same performance specifications as Sipwise C5.



### High Availability

High availability is guaranteed by services and data being available on each node of a pair in active and standby mode respectively. Synchronization runs via dedicated network link between the nodes of a platform pair. Signalling and media connections are preserved in case of fail-over.

The Sipwise C5 HA mechanism, extended by CPBX-specific data replication, is used to provide maximum service up-time.

# Features



## Complete C5 Feature Set

Since the CPBX module sits on top of Sipwise C5, all CPBX customers can use the full range of C5 features, like Call Forwards, Call Blockings, Voicemail, Fax Server & many more.



## Auto-Attendant

Our Auto-Attendant functionality features configurable IVR menus. In addition, custom greetings depending on the extension/group called, followed by a menu allowing to enter an extension (phone or group), can be provided.



## Music on Hold (MOH)

Music can be put on hold, which is configurable per extension/group with fallback to a default sound file.



## Call Queues

A call queue mechanism allows the customer to queue up a user-defined number of callers towards an extension, letting the calling party know its position in the queue. A configurable wrap-up time is highly beneficial for the customer who is in the extension. It gives the client time between calls.

If the queue gets full, new callers are rejected with custom messages, and hunting towards other extensions, groups or applications, like Auto Attendant or Voicemail, can be configured.

Flexible and Automated Activation Process All subscribers are managed and activated directly on the Sipwise C5 using the north-bound interfaces (e.g. Web-based interface, REST API).

End-user devices with generic firmware (e.g. directly obtained by the customer from arbitrary merchants) may completely bypass the operator's provisioning workflow. In this case, the CPBX interface directly provisions the URL for the provisioning server onto the phone via HTTP or utilizes vendor-specific zero-touch provisioning mechanisms (e.g. Yealink RPS, Polycom ZTP and others).



## Busy Lamp Field (BLF)

An indicator light on the phone displays the busy status of another extension. Incoming calls can be picked up during call setup by pressing the indicator button ("directed call pickup").



## Ring Groups – Hunting Groups

Multiple phones may be configured to ring in sequential, parallel or random order within a hunt group.

Hunt groups can utilize the same features as normal extensions, e.g. call-forwards to Auto Attendants or voicemail, or playing an announcement within a specific time period.



## Unattended Call Transfer

Active calls can be transferred to another extension or external number by pressing a blind transfer button and entering the destination.

For transfers in progress, music-on-hold can be configured. The call on the transferring party is immediately ended after the transfer is invoked.



## Attended Call Transfer

Calls can be transferred to another extension or external number by pressing a call transfer button and entering a destination.

The referrer is being connected to the destination, and can subsequently connect the referred party to the destination while the call is in progress or connected. During transfers, the configured music-on-hold sound for the destination is played to the referred party.





## Shared Line Appearance (SLA)

This feature allows a single SIP user to be added as a shared line on several phones. Thus, calls can be passed around between phones by placing them on hold on one device and taking them off hold on another.

Lights indicate the status of the shared line: seized, call in setup, call in progress (solid light) or call on hold (flashing light). A common use case is a manager/assistant setup, whereby an incoming call ringing at both sets can be answered by the assistant, and placed on hold to be picked up by the manager.



## Office-Hours Announcement

Office-hour announcements can be configured for specific time windows, as well as call forwarding to voicemail or a specific extension. This feature is configurable per extension or group respectively.



## Call Park and Pick-Up

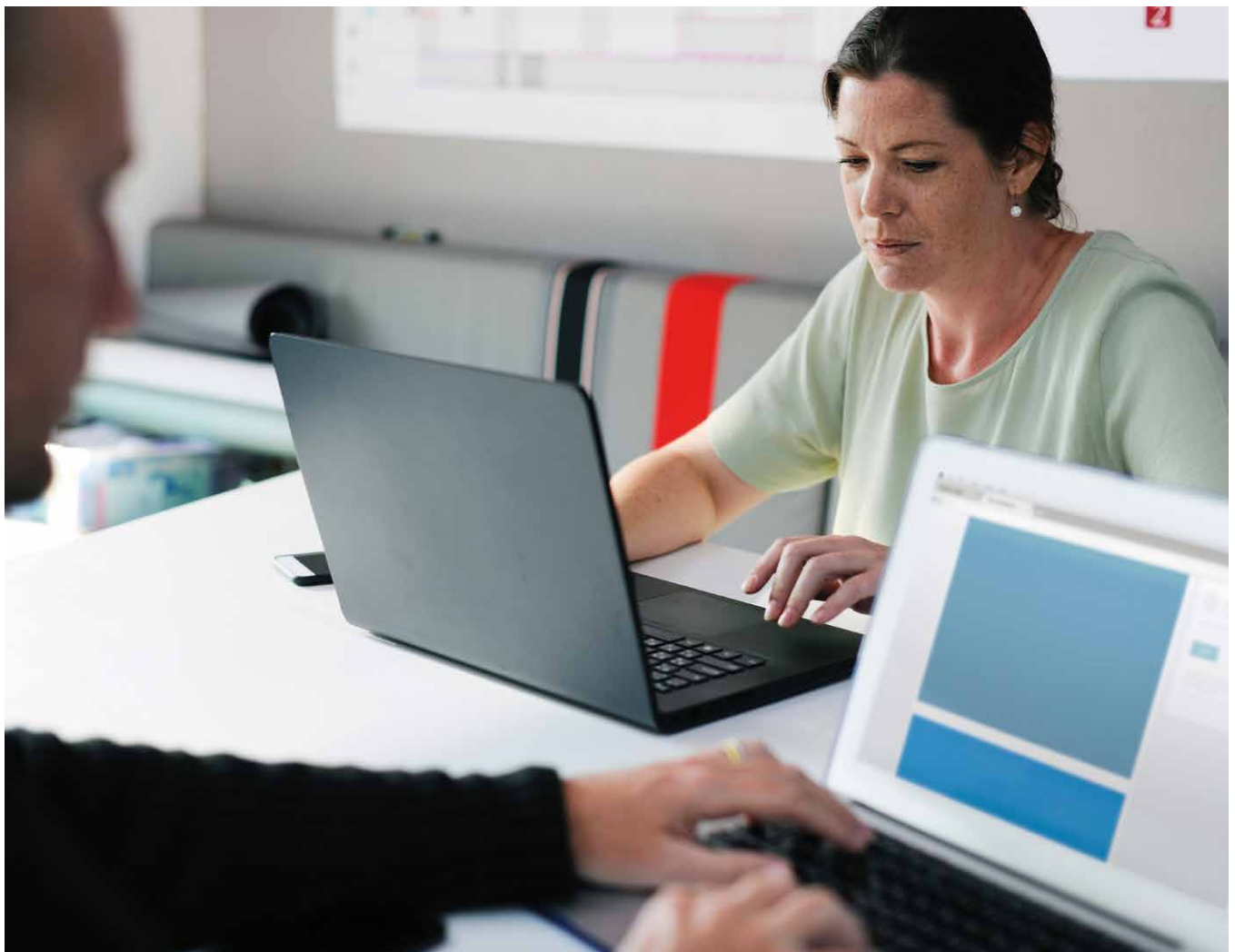
Call park is a "non-exclusive hold". It puts a call on hold, available for pick-up from any extension configured at the virtual PBX.

A call can be parked by anyone and from any extension using a parking slot number and may be picked up from any other extension which is aware of the slot number. That way, a customer might park the call on her desk phone and pick it up on the mobile phone or at a colleague's desk.



## Fixed-Mobile Convergence

Sipwise Sip:phone for mobile devices may be integrated into the cloud PBX setup using the Sip:phone Mobile Push Module. The cloud PBX' Fixed Mobile Convergence functions are extended into GSM, based on the C5 Call-Through Module providing the "one business number" feature to cloud PBX subscribers.





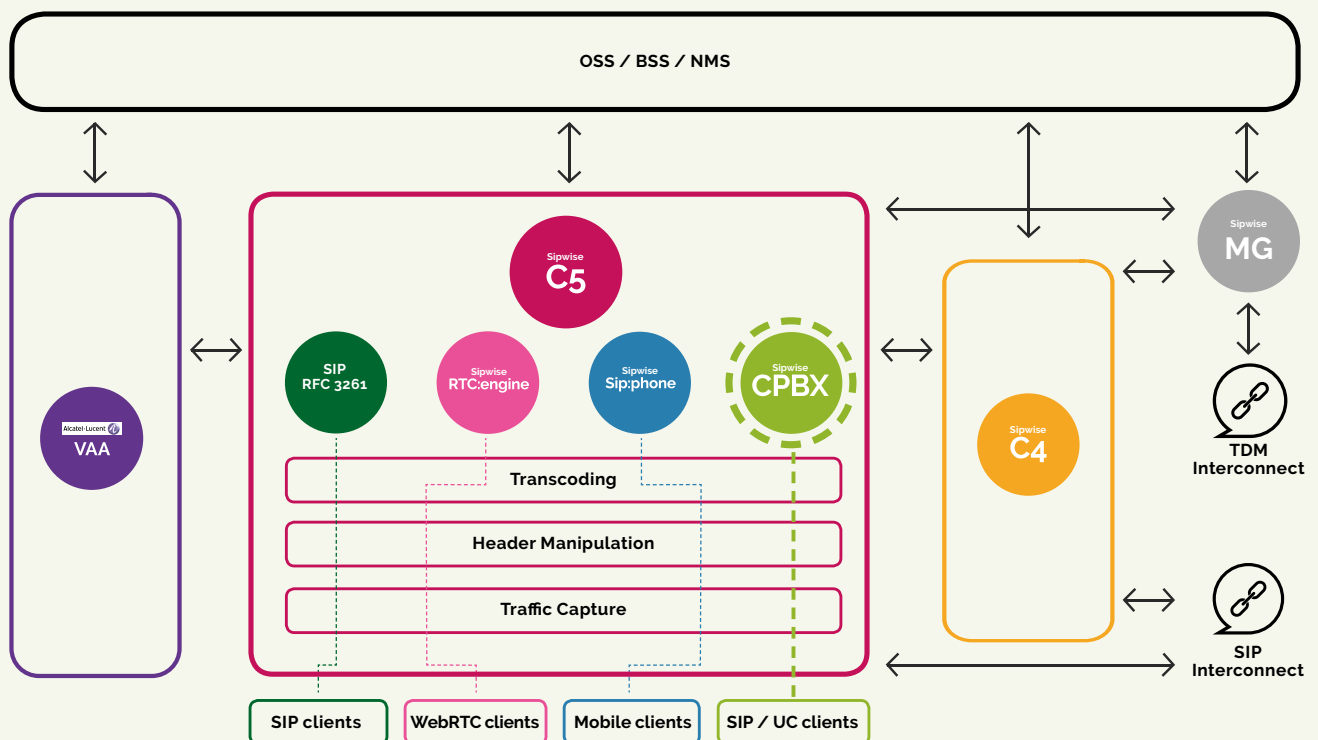
## Providing you with PBX Services: IP PBX and Hosted PBX

Sipwise PBX server is a fully featured add-on for a hosted Public Branch Exchange (PBX). It combines Next Generation Network (NGN) technology with turn-key ease of use. Tailor-made for the unified communication needs of small and medium enterprises. It is the system of choice for many NGN providers and operators in Sipwise unified communication solutions.

CPBX is a leading-edge product. It is an extension to the Sipwise C5 Softswitch. Installation is seamless and fast. No need for any extra hardware as well. Once this is installed, it will greatly enhance the capabilities of the C5 Softswitch, providing the multitude of new functionalities that you as a network provider require, including, but not limited to: call queues, ring groups, call transfer, auto-provisioning of selected desk-phone vendors and fixed-mobile convergence to a mobile device of your choice.

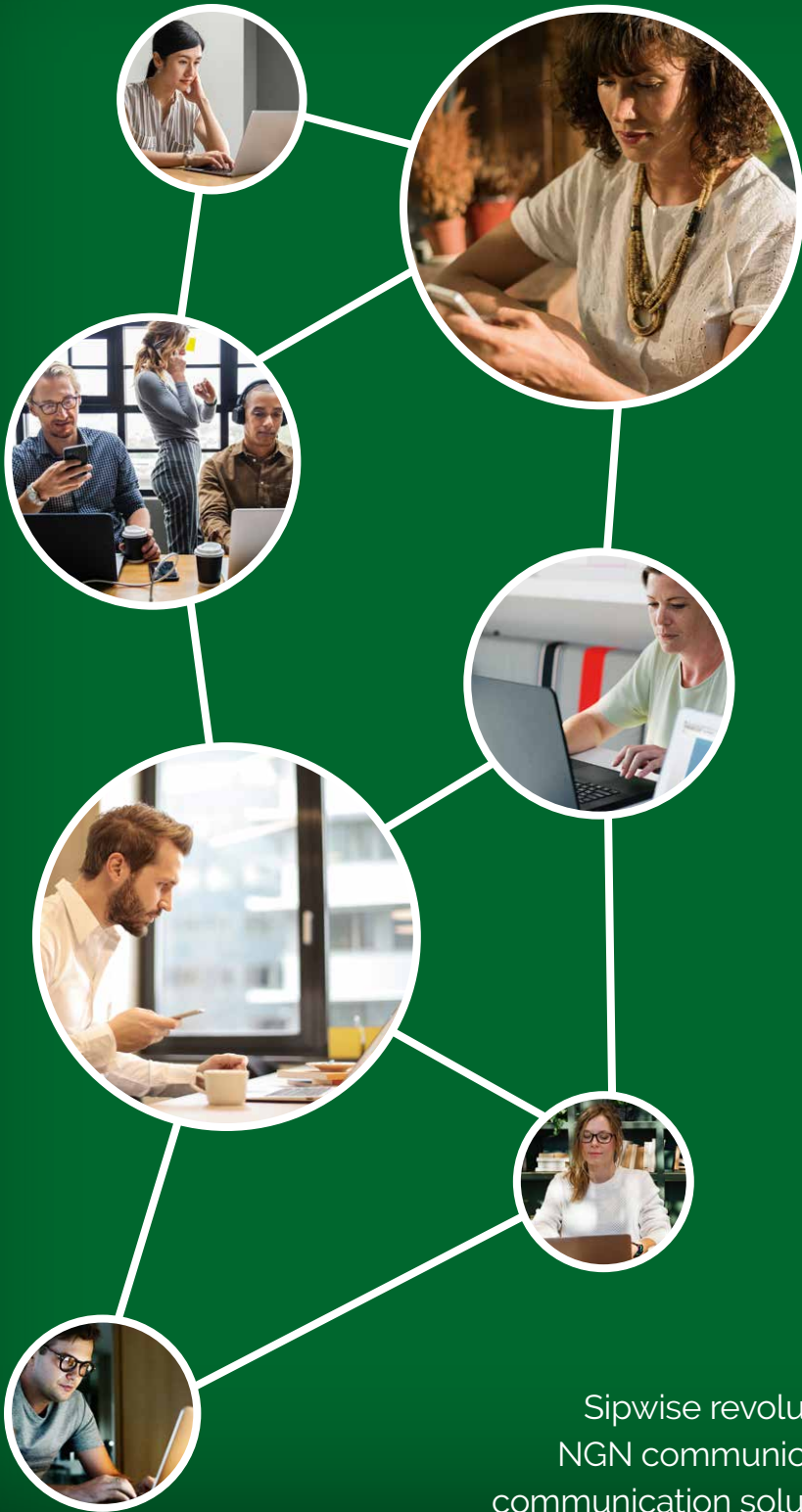
Sipwise CPBX gives the NGN network providers and operators a ground-breaking solution for all business real-time communication needs.

## CPBX within Our Product Portfolio



# Unified Communications

enjoy a new future in the cloud



**efficient**

Open and flexible software architecture ensures fast integration of our services into existing infrastructure.



**simple**

Provide VoIP, video, presence and chat services to any desk and soft phone, IP PBX and mobile / WebRTC device.



**innovative**

Cutting edge technology based on standard APIs and interfaces. Be ready for Web 3.0 with our RTC:engine technology.



**profitable**

Increase your margin by lowering total cost of ownership dramatically – Opex and Capex.

Sipwise revolutionizes the way telcos operate the NGN communication systems. We provide modern communication solutions for any deployment use case.



for Enhanced Cloud Communication

## Need help? Contact us now:

Sipwise GmbH  
+43-1-252 152 3  
[sales@sipwise.com](mailto:sales@sipwise.com)  
[sipwise.com](http://sipwise.com)

